



RECOVERY

COLLEGE

GREENWICH

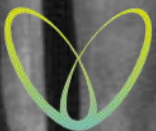
PROSPECTUS

November—December 2018

**ART IN ACTION / COOKING WITH
CONFIDENCE / WOODWORK /
QUILTING / ALLOTMENT /
EMPLOYABILITY FOR MENTAL
HEALTH / MEDITATION / PEER
SUPPORT / READING FOR PLEASURE/
KEEP FIT FOR BEGINNERS/ and much
more!**

**Supporting
people's recovery through
learning achievement**

Recovery



College

23 ANGLESEA ROAD, WOOLWICH, SE18 6EG

WWW.RECOVERY COLLEGE GREENWICH.ORG

WELCOME

We offer a wide range of courses, workshops and activities to support people as they discover and develop their skills and interests on their journey through recovery.

All our facilitators are dedicated to recovery and wellbeing and have a range of personal and/or professional experience in adult education, mental health recovery and dual diagnosis.

Our courses are available to anyone, regardless of their experience. All are welcome to attend the college and we promote equality & diversity. We support everyone who becomes a student to accomplish their learning and recovery ambitions. We do this by providing a safe, welcoming and non-judgemental learning environment.

We work on the principle of co-production and co-delivery, which means our courses are developed and delivered by tutors and peer trainers with lived experience. They are supported by experienced facilitators with extensive adult vocational training and personal development backgrounds.

HOW TO ENROL

Enrolling at the Recovery College is easy. If you find a course or workshop that interests you, just give us a call on **020 8294 7909** and we will arrange a time for you to come and have a chat.

We can book you on the course(s) or workshop(s) which interest you including our popular Foundation Course that can help you decide on the courses that you feel will support you the most with your goals and aspirations for recovery.

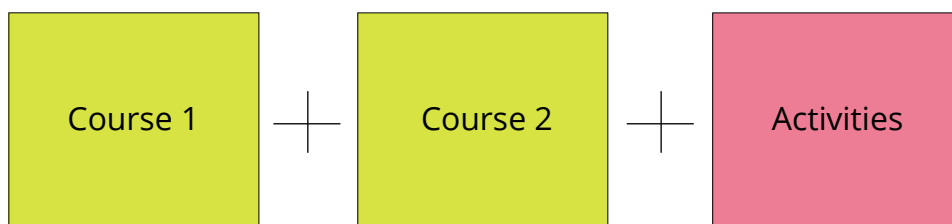
Student Journey

New Students



We ask new students to do our flagship Foundation Course. This provides an introduction into how we work and the principles of mental health recovery. On completion of this course, students will be able to complete an Individual Learning Plan to identify their wellbeing goals and how the College can best support them in their journey.

Students



Note: Activities as listed in the prospectus, operate on a rolling enrolment basis and open to all students.

Contents

Courses

1	Foundation Course	Page 5
2	Intermediate Meditation	Page 6
3	Confidence & Self Esteem	Page 6
4	Intermediate Knitting	Page 6
5	Cooking with confidence	Page 7
6	Art in Action	Page 7
7	Quilting	Page 7
8	Reading for Pleasure	Page 8
9	Keep Fit for Beginners	Page 8
10	Hearing Voices Support Group	Page 8
11	Employability for Mental Health	Page 9
12	The Garden Project	Page 10
13	Peer Training	Page 11
14	Woodwork	Page 12
15	Home & Life Skills	Page 13

Peer Support Groups

1	Men's Circle	Page 14
2	Ladies Circle	Page 14

Activities

1	Allotment	Page 15
2	Lunchtime Health Walk	Page 15

Foundation Course

Overview

This six week course provides the perfect introduction to recovery and the learning opportunities we offer at the College. It enables students to make informed choices about their personal recovery journey, including the courses that will support them the most with their goals and aspirations.

1. The Recovery College - who we are and what we do
2. Wellbeing - Exploring CHIME and the 5 Ways to Wellbeing
3. Overcoming Stigma | You are not your Diagnosis
4. Escaping the Illness Trap
5. The Recovery Process
6. Goal Setting for Recovery | Preparing for an Individual Plan

This course is recommended for all students who are just beginning their recovery journey or are new to the Recovery College.

Dates: Tuesdays 2-4pm or Thursdays 10-12pm

Courses

Intermediate Meditation

Overview

The Intermediate Meditation course is for those students who have already completed the Beginners course or have meditated in the past. We will explore different practices of meditation and develop strategies to focus the mind and enhance wellbeing.

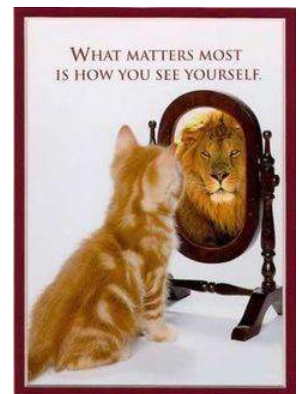


Date: Starts Friday 9th November 2pm—4pm (6 weeks)

Confidence & Self Esteem

Overview

What is confidence? Where does it come from, and more importantly where does it go? The Confidence & Self-Esteem course is about developing self-awareness, acceptance and celebrating your uniqueness. So, make a choice to take a chance if you want your life to change.



Date: Starts Thursday 8th November 10am—12pm (6 weeks)

Intermediate Knitting

Overview

The intermediate knitting group is for those who have mastered the basic knitting techniques. On this course you will learn new techniques, how to read patterns and choose yarns to create beautiful knitted items



Date: Starts Monday 5th November 1pm—4pm (6 weeks)

Courses

Cooking with Confidence

Overview

This 6 week cookery class is designed to promote healthy living as part of a healthy lifestyle and teach you how to confidently make simple nutritious meals. Try out different types of quick, budget friendly, delicious and healthy food in a friendly interactive class.



Date: Starts Tuesday 6th November 2pm—4pm (6 weeks)

Art in Action

Overview

This exciting course is a chance to develop key creative skills and approaches to art within a group setting. Each week the group will work together to create one piece of themed artwork. No experience is needed, just a willing to be involved!



Date: Starts Tuesday 6th November 9.30am—12pm (6 weeks)

Quilting

Overview

Quilting is the process of sewing two or more layers of fabric together to make a thicker padded material, usually to create a quilt or quilted garment. This course explores the craft of quilting. You will learn techniques to create beautiful quilted items



Date: Starts Wednesday 7th November 9.30am—12pm (6 weeks)

Courses

Reading for Pleasure

Overview

Reading for pleasure is often a solitary affair, but increasing numbers of people are embracing the social aspect of reading groups. This course will create a buzz about reading that will encourage even the most reluctant reader to pick up a book and develop a love for reading.



Date: Starts Friday 9th November 10am—12pm (6 weeks)

Keep Fit for Beginners

Overview

If you have difficulty with keeping fit or are just starting out, it needn't mean exercise is out of the question. We all know that being physically active is good for us, but not everyone can take part in activities like walking, cycling or aerobics classes. If that's the case for you, but you want to keep active, then Keep Fit for Beginners could be just what you're looking for.



Date: Starts Thursday 8th November 12.30—1.30pm (6 weeks)

Hearing Voices Support Group

Overview

Hearing voices is a more common experience than many people realise. This does not make it abnormal. The Hearing Voices Support Group is a place to meet others who hear voices and share experiences and coping strategies.



Date: Starts Friday 9th November 10am- 12pm (6 weeks)

Employability for Mental Health

Overview

Want to write your CV or learn how to apply for jobs or volunteer positions? Then our Employability for Mental Health Course is for you, as this course will allow you to work on your individual needs and be supported by an experienced tutor. The subjects covered will be determined by the needs of the students and will help take the anxiety out of getting ready to return to work or move into volunteering. Subjects that can be covered include CV writing, job/volunteer applications, interview practice and cover letters.



Dates: Starts Tuesday 6th November 10am-12pm (6 weeks)

Courses

The Garden Project

Overview

The garden project is a student group that meet once a week to plan and develop the garden at the college. Throughout this half term they will design and plan the garden layout, decide on what will be grown and begin the hard landscaping work in preparation for planting to commence.

Date: Starts Thursday 8th November 10am—12pm (6 weeks)



Join Our Peer Training Course!

We emphasize co-production and delivery of our courses and activities through our Peer Training course meaning that we recruit students to work alongside our tutors to deliver courses and activities. Our 6 week peer training course enables students to develop new skills which will enable them to work effectively in the classroom.

In order to join this programme you will need to be enrolled at Recovery College Greenwich as a student and have attended at least two courses so that you can experience first hand our recovery focused approach to teaching and learning.



Courses

Woodwork

Overview

Making something from scratch is always a pleasure and each student on the woodworking course will make a bird-feeder to take home to feed the birds in the hardest months of winter. It's a simple design which is ideal for a beginner but interesting enough for someone more experienced.



Date: Starts Thursday 8th November 2pm—4pm (6 weeks)

Home and Life Skills

There is a wide range of skills and knowledge that is helpful for successfully living independently. This suite of workshops help you develop those skills and apply them to your domestic life. You are able to sign up for as many of the workshops as you feel will be beneficial to yourself

Workshop 1: Developing Confidence & Personal Boundaries
Wednesday 7th November 10am—12pm

Workshop 2: Budgeting & household Finances
Wednesday 14th November 10am—12pm

Workshop 3: Correspondence & Communication
Wednesday 21st November 10am—12pm

Workshop 4: Managing Routine in Cleaning, Washing & Ironing
Wednesday 28th November 10am—12pm

Workshop 5: Maintaining your physical health and fitness
Wednesday 5th December 10am—12pm

Workshop 6: Shopping for and Preparing Affordable Healthy Meals
Wednesday 12th December 9.30am—12pm

Peer Support Groups

Ladies Circle

Overview

Our Ladies Circle is a safe space for women to share feelings, gain support from peers and discuss difficulties and hardships they may be facing. They also explore famous women through time, what they have achieved in their lives and what we can learn from them to feel empowered.



Date: Starts Wednesday 7th November 2-4pm (6 weeks)

Men's Circle

Overview

Come along and share your experiences about being a man, gain support from peers, and have a laugh. Our Men's Circle is a safe space for men to discuss in an informal setting the issues men face in the modern world.



Date: Starts Wednesday 7th November 2-4pm (6 weeks)

Activities

Allotment

Overview

This activity takes place in the open air at our allotment! Each week you will be taught how to use gardening tools, how to prepare the ground for planting, growing and harvesting a variety of fruit and vegetables, much of which will be used in the Stir café.



Date: Every Tuesday, 9:30am. Meeting point Stir Café.

Lunchtime Health Walk

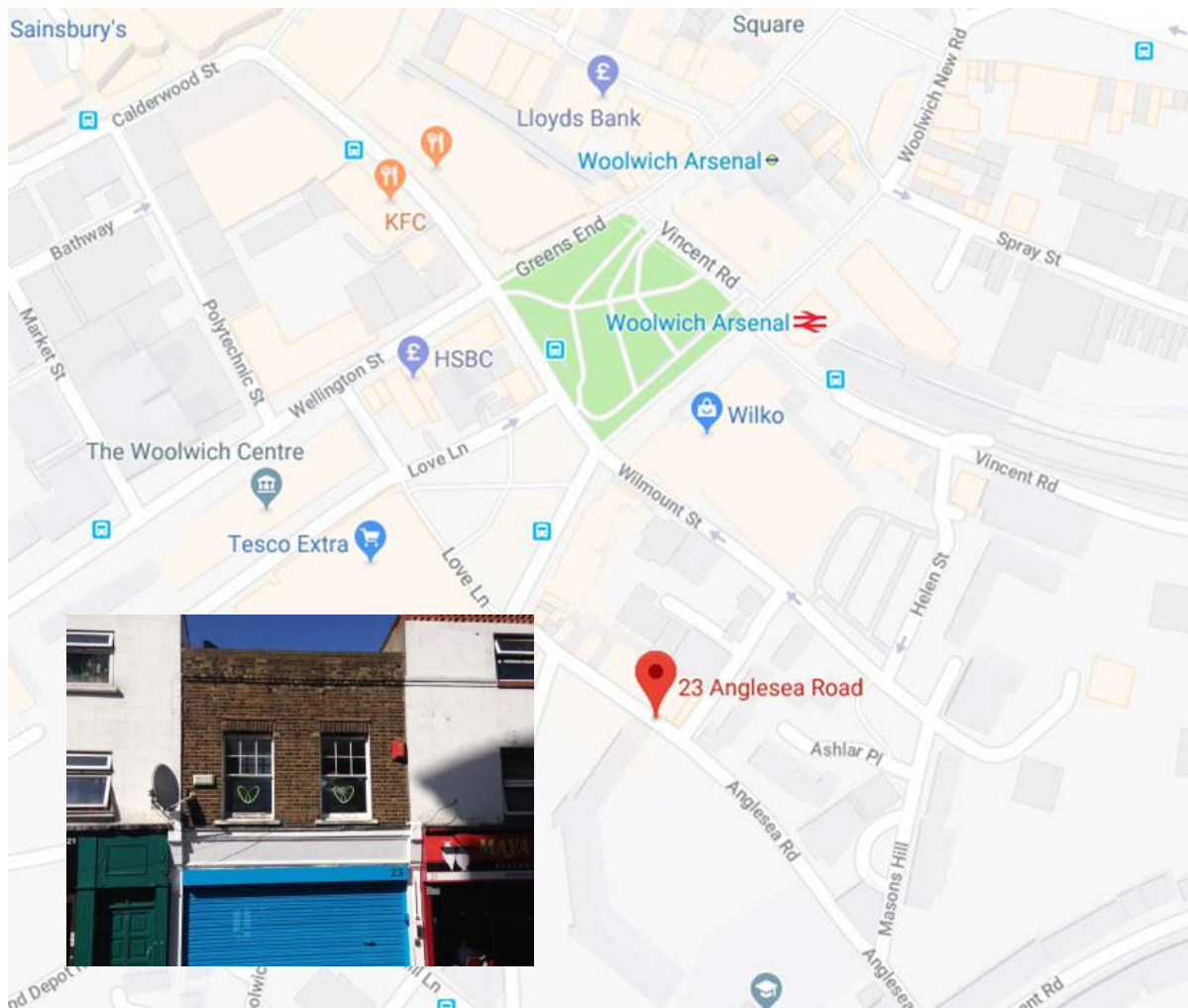
Overview

Come and join us every Wednesday for up to an hour walk around the local area to improve your health and wellbeing. Learn some interesting historical facts about the area. We will walk various accessible routes.



Date: Every Wednesday, 12:30pm. Meeting point Stir Café.

FIND US



23 Anglesea Road, Woolwich, SE18 6EG



020 8294 7909



recoverycollegereception@bridgesupport.org



www.recoverycolleggreenwich.org



@RecoveryCollegeSE186EG

Allotment



134 Church Manor Way, SE2 9LX



Courses

Peer Training programme

Expressions of interest!

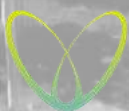
At the Recovery College, we emphasise co-production and co-delivery of all our courses. Our Peer Training programme is designed for students who have already started their recovery journey and wish to explore how they can use their own lived experience to help others who are facing similar challenges .

The eight week course enables students to develop new skills which will enable them to work effectively in the classroom alongside a Tutor.

Eligibility

In order to join this programme you will need to be enrolled at Recovery College as a student and have attended at least two courses so that you can experience first hand our recovery focused approach to teaching and learning.

If you are interested or want to find out more about the programme please speak to a Recovery Tutor at the College. The next available dates for the programme are subject to sufficient numbers of interests.



RecoveryCollege

The Recovery Place
23 Anglesea Road
London SE18 6EG
020 8294 7909
www.recoverycollegegreenwich.org